



ORGANIZE YOUR VISIT TO CINECITTÀ SHOWS OFF

Information

www.cinecittasimostra.it



 visit@cinecittaluce.it

 06 72293269

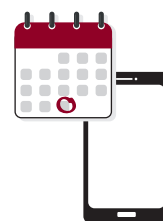
Ticketing

Choose the day and time for your visit.

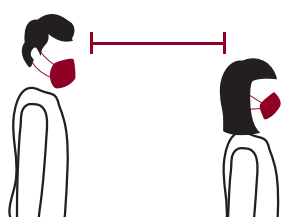
Purchase your ticket online at www.ticketone.it

Tickets may be purchased at the Ticket Office if this has been previously confirmed by email, contact: visit@cinecittaluce.it

Payment by debit or credit card is highly recommended.



ENTRANCE TO CINECITTÀ SHOWS OFF



WAIT YOUR TURN

Wear a mask, wait your turn, observe social distancing.



TEMPERATURE SCREENING

Your temperature will be taken on arrival. Entry to the museum is prohibited for those with temperatures equal to or higher than 37.5 °.



DISPLAY AND/OR PICK UP YOUR TICKET

Display your ticket or your booking at the Ticket Office. The Cinecittà Shows Off Ticket Office has protective glass.



FOLLOW THE SIGNS

Follow the signs in the parkland of Cinecittà Shows Off to the one-way route through the exhibition and/o follow the open-air visit to the three permanent sets.

VISITING CINECITTÀ SHOWS OFF

Signage and instructions for a safe visit

Follow the signs in the park and the instructions of Museum staff while visiting the exhibitions and the sets. Respect the one-way route through the display areas and always keep the required safety distance from others.

Wear a face mask at all times, including outdoors and on the open-air set tour, and always keep the required safety distance.

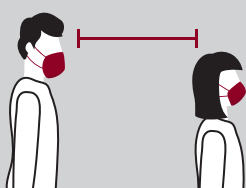
You are reminded that every visitor is individually responsible for containing infection.



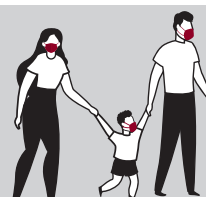
Face masks are obligatory, including in the outdoor areas



Social distancing (min. 1m) must be observed in the bookshop



Always keep the required safety distance (min. 1m) from others



Household groups may visit without distancing from each other



Disinfect your hands or gloves with the sanitiser gel provided



Access to the toilets will be restricted to a maximum number at one time